



DAY / NIGHT IP CAMERA CS

User Manual

HRT445IP

NORME GENERALI DI SICUREZZA - General safety recommendations

Sicurezza delle persone - Safety warnings



Leggere e seguire le istruzioni - Tutte le istruzioni per la sicurezza e per l'operatività devono essere lette e seguite prima che il prodotto sia messo in funzione.

Precauzioni particolari - Rispettare tassativamente l'ordine delle istruzioni di installazione e collegamento descritte nel

manuale. Verificare le indicazioni riportate sulla targa di identificazione: esse devono corrispondere alla vostra rete elettrica di alimentazione ed al consumo elettrico. Conservate le istruzioni per una consulta futura.

Read and follow the instructions - Read the installation instructions before connecting the system to its power source. Follow these guidelines to ensure general safety.

In order to prevent injury, burns or electrical shock to yourself and others, follow the connection instruction plan carefully.

Sicurezza del prodotto - Product Safety

Non posizionare in prossimità di liquidi oppure in un ambiente ad umidità eccessiva.

Non lasciare penetrare del liquido o corpi estranei all'interno dell'apparecchiatura.

Non ostruire le griglie di aerazione.

Non sottoporre all'esposizione dei raggi solari oppure in prossimità di fonti di calore.

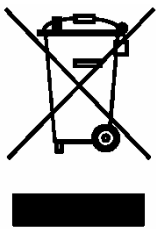
Do not use the product in a wet location.

Never push a foreign object through an opening inside the product.

Slots and openings are provided for ventilation and should never be covered.

Do not place under direct sunlight or heat sources.

INFORMAZIONI SULL'AMBIENTE - ENVIRONMENT INFORMATION



Note per lo smaltimento del prodotto valide per la Comunità Europea

Questo prodotto è stato progettato e assemblato con materiali e componenti di alta qualità che possono essere riciclati e riutilizzati. Non smaltire il prodotto come rifiuto solido urbano ma smaltirlo negli appositi centri di raccolta. E' possibile smaltire il prodotto direttamente dal distributore dietro l'acquisto di uno nuovo,

equivalente a quello da smaltire. Abbandonando il prodotto nell'ambiente si potrebbero creare gravi danni all'ambiente stesso. Nel caso il prodotto contenga delle batterie è necessario rimuoverle prima di procedere allo smaltimento. Queste ultime debbono essere smaltite separatamente in altri contenitori in quanto contenenti sostanze altamente tossiche.

Il simbolo rappresentato in figura rappresenta il bidone dei rifiuti urbani ed è tassativamente vietato riporre l'apparecchio in questi contenitori.

L'immissione sul mercato dopo il 1° luglio 2006 di prodotti non conformi al DLgs 151 del 25-07-05 (Direttiva RoHS RAEE) è amministrativamente sanzionato.

Disposal of waste products for European Union

This products was designed to minimize their impact on the environment by reducing or eliminating hazardous materials and designing for recyclables.

This product should be handed over to a designated collection point, e.g., on an authorized one-for-one basis when you buy a new similar product or to an authorized collection site for recycling waste electrical and electronic equipment. Improper handling of this kind of waste could have a possible negative impact on the environment and human health due to potentially hazardous substances.

This symbol indicates that this product has not to be disposed of with your household waste, according to the WEEE Directive.

For more information about where you can drop off your waste equipment for recycling, please contact your local city waste authority, or your household waste disposal service.

GARANZIA - Warranty

Questa garanzia ha validità di 2 anni a partire dalla data di acquisto assicurata solo dietro presentazione della fattura o scontrino rilasciati al cliente dal rivenditore.

L'assistenza gratuita non è prevista per i guasti causati da:

-Uso improprio del prodotto, immagazzinamento inadeguato, cadute o urti, usura, sporcizia, acqua, sabbia, manomissione da personale non autorizzato del prodotto rispetto a quanto previsto nei manuali d'uso inclusi.

-Riparazioni, modifiche o pulizia effettuate da centri assistenza non autorizzati da HR EUROPE.

-Danni o incidenti le cui cause non possono essere attribuite alla HR EUROPE, comprendenti e non limitati a fulmini, eventi naturali, alimentazione e ventilazione inadeguata.

This warranty is valid for 2 years from the date of purchase obtained only against presentation of the original invoice/ cash ticket issued to the customer by the retailer.

Warranty repair service is excluded if damage or defects have been caused by:

-Improper use, incorrect storage, dropping or shocks, corrosion, dirt, water, handling or operation of the product as referred to in the users' manuals.

SUMMARY

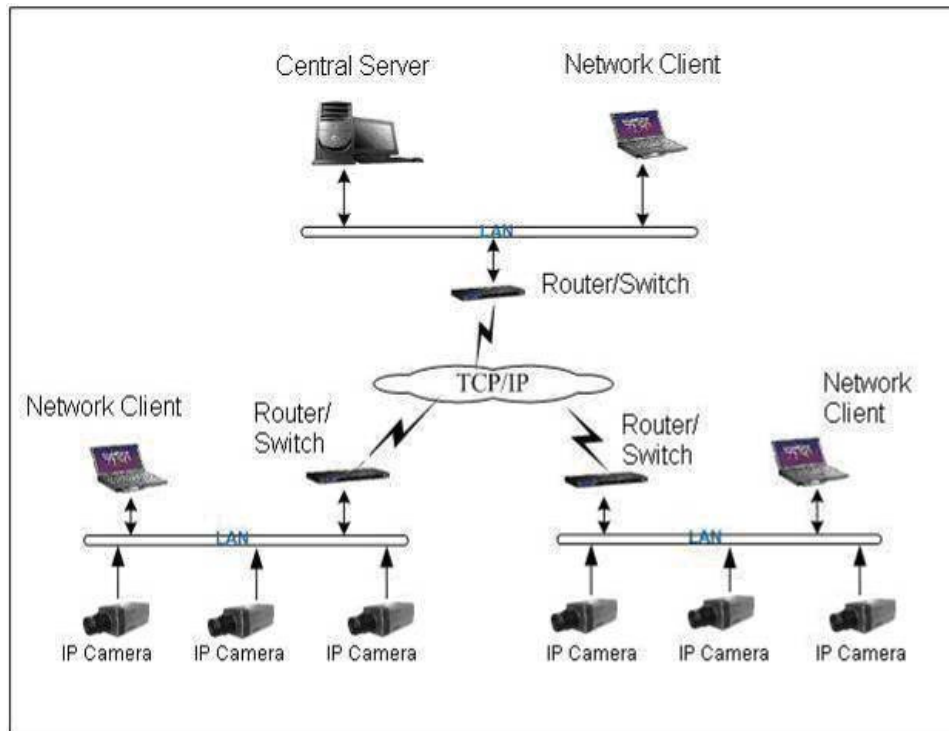
1 Introduction	4
1.1 Feature	4
1.2 System Requirement	4
2 Specification	4
2.1 Technical Specification	4
3 Installation	6
3.1 Install CS camera	6
3.2 Real Panel.....	6
3.2.1 I / O port (RS 485).....	6
3.2.2 I / O socket	7
3.2.3 Alarm Input and Output	7
3.3 SD Card Installation	8
3.4 PC or Network connection	8
4.Contents of CD-ROM	9
5 Search for devices on the network	9
6 Usage through the web	9
6.1 Network Connection.....	9
6.2 Login	10
7 Quick guide to the choice of software	12
7.1 HR-EPSS BASIC.....	12
7.2 HR-EPSS BUSINESS(trial 90gg)	12
7.3 HR-MOBILE PSS	13

1 INTRODUCTION

1.1 Feature

- 1/3 inch SONY CCD , 420TVL , support day/night mode switch.
- Manual aperture: 3.5mm~8mm / F1.4 For HRT445 IP.
- Max D1 resolution. Support 30f/s(NTSC), 25f/s(PAL) in all resolutions.
- Support dual-stream function.
- Support network on-site listening, broadcast and audio talk.
- Support hot swap SD card storage(compatible with SDHC).

You can use this Network Camera alone or you can use in a network and configure network client-end. Refer to the following layout for network connection information. See figure.



1.2 System Requirement

This series Network Camera has the following system requirement.

- Processor : Pentium 4, 1.5 GHz or higher (Pentium 4, 2.4 GHz or higher recommended) .
- RAM : 256 MB or higher.
- OS : Microsoft Windows 2000, Windows XP , Vista.
- Network Browser : Internet Explorer 6.0 or higher .

2 SPECIFICATION

2.1 Technical Specification

Specification		HRT445IP	
Power		12V DC	
Power Consumption		4.5W	
Working Temperature		0°C – 50°C	
Working Humidity		< 90 %	
Network		Rj45 10/100 full duplex	Max support 10 users to implement real-time network
Video	Standard Supported	PAL (625 Line , 50f/s) NTSC (525 Line , 60f/s)	
	Encode Capability	H.264	
	Encode bit stream	D1 (704×576) CIF (352×288) QCIF (176×144) HD1 (352×576)	There is 6 level video quality.
	Video recording speed	NTSC 1f/s-30f/s for each channel(adjustable) PAL 1f/s-25f/s for each channel(adjustable)	
Narrow-bandwidth transmission capability		video: max 500ms audio: max 200ms	

Specification		Note
Lens control	Zoom Adjustment	Manual
	Focus Adjustment	Manual
	Iris Adjustment	Manual
CCD	BLC Control	Manual On/Off
	White bilance adjustment	Manual / Auto
	Constrastness adjustment	Manual / Auto
	Brightness adjustment	Manual / Auto
	Electronic shutter control	Manual / Auto
	Color /B&W(Day/Night)	Manual / Auto
	Video	QCIF/CIF/ HD1/D1
H.264 Video compression		
Motion Detection		304 Area (16*19 pixels) sensitività value ranger 6
Dual-stream		1-ch D1(20FPS) + 1-ch CIF(20FPS)
Audio	1 Input	
	1 output	
Network	DHCP	supported
	DDNS	supported
	SMTP	Inactive
Record	Manual record /programmed	
	Motion Detection record	
	Alarm record	
OSD	Channel title display	
	Privacy Mask	
Storage	Local SD storage	Support high speed card/low speed capability1/2/4GB
	Based on NAS HRNS3015P network storage	
Allarme	1 Output	
	2 Input	
RESET	Support hardware/software/Watchdog reset	

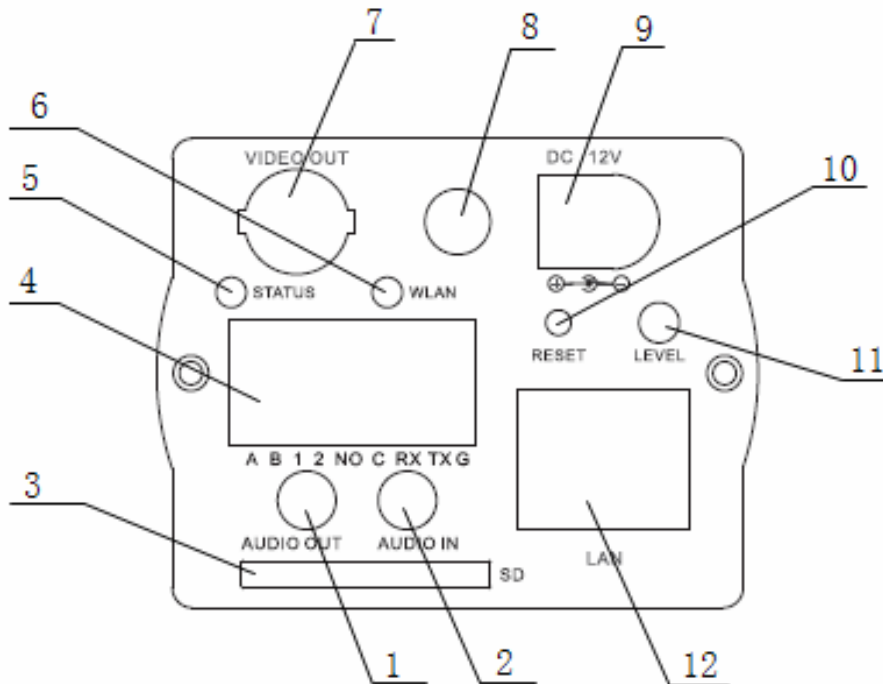
3 INSTALLATION

3.1 Install CS camera

This series Network Camera is compatible with CS installation lens.

3.2 Real Panel

- | | | |
|------------------|------------------------------|--------------------------------------|
| 1. Audio output | 2. Audio input | 3. SD card port |
| 4. I/O port | 5. Status indication light | 6. Wireless network indication light |
| 7. Video output | 8. Wireless antenna | 9. Power port |
| 10. RESET button | 11. Brightness adjust button | 12. Network port |



Working status of status indication light

Power indication light

- When connect the IP camera to power, the red light becomes on.
- Green light flashes when system is reading-writing SD card.
- Green light flashes and becomes on so that you can know power is O.K, you can log in now.

Reset operation

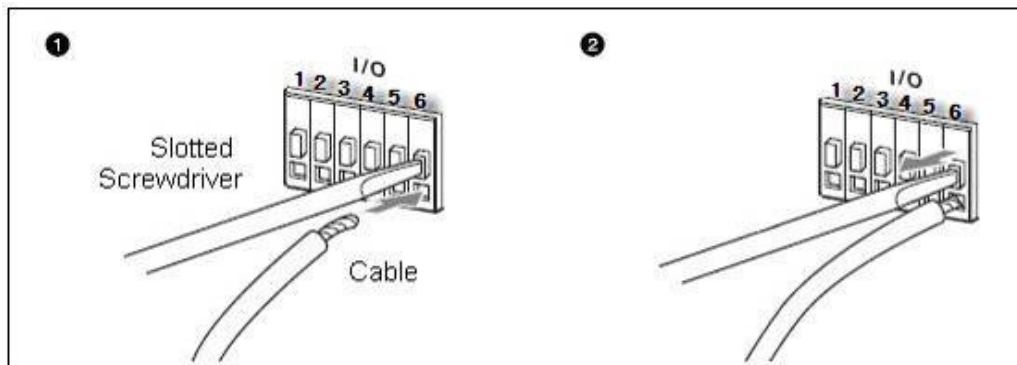
You can click RESET button to restore factory default setup. After the power indication light became green, press this button for at least five seconds, you can see the system automatically reboot. After rebooting, the system restored factory default setup.

3.2.1 I / O port (RS 485)

No Pin.	Pin Name	No Pin.	Pin Name
A	RS485_A	C	ALARM_OutB
B	RS485_B	RX	RS232_RX
1	ALARM_IN1	TX	RS232_TX
2	ALARM_IN2	G	GND
NO	ALARM_OutA		

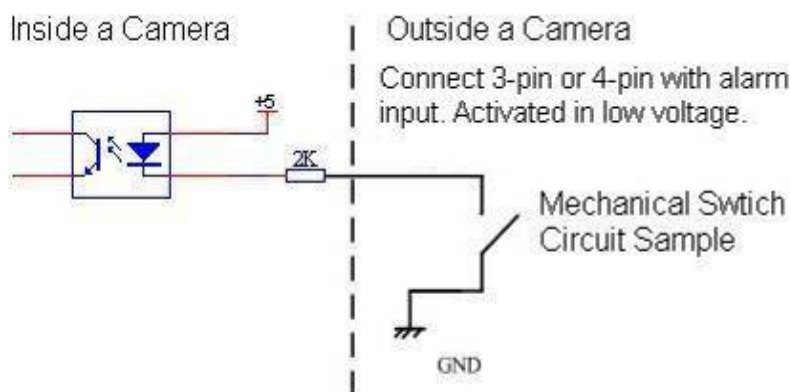
3.2.2 I / O socket

Use slotted screwdriver to press the button of cable groove (AWG SN 28 to 22). Insert the cable into the groove and then release the screwdriver.

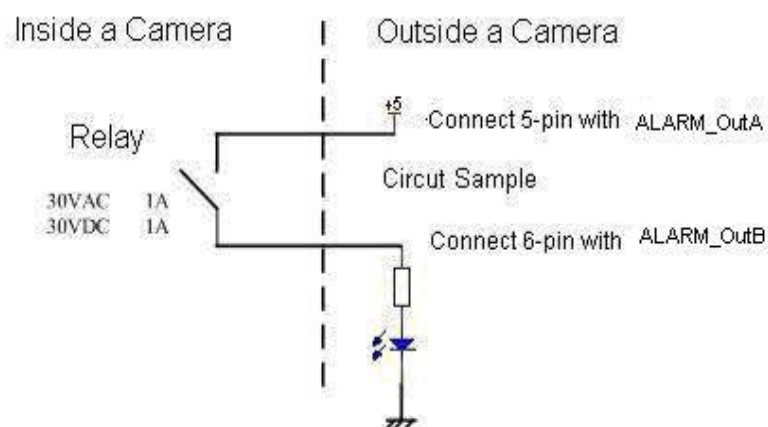


3.2.3 Alarm Input and Output

In the main menu, from configuration to alarm setup, you need to set alarm type as normal open. You can refer to figure for alarm input.



Refer to figure for alarm output.



3.3 SD Card Installation

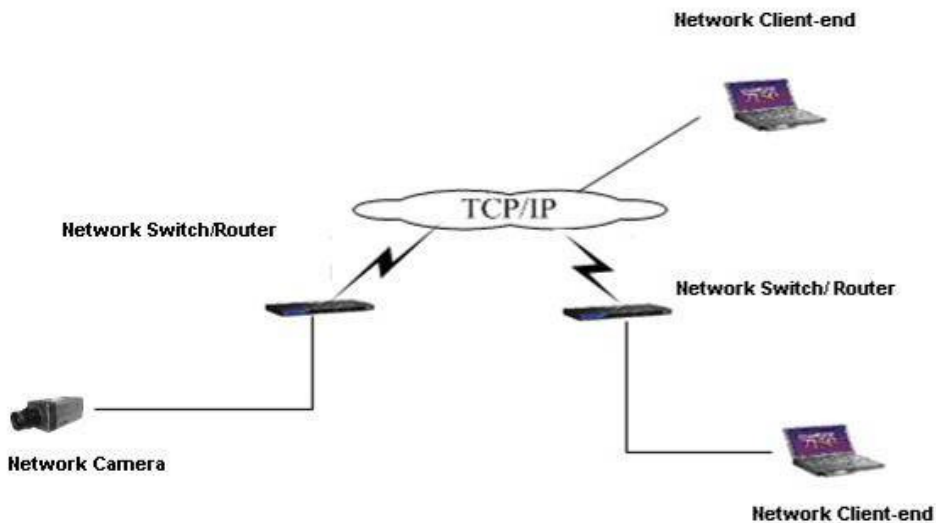
Before installing SD card, make sure current SD card is not in protection mode, and then you can insert the SD card in the network camera.

Note: SD file system is not compatible with MS Windows OS, you need to log in network camera and then download data to local PC via network.

3.4 PC or Network connection

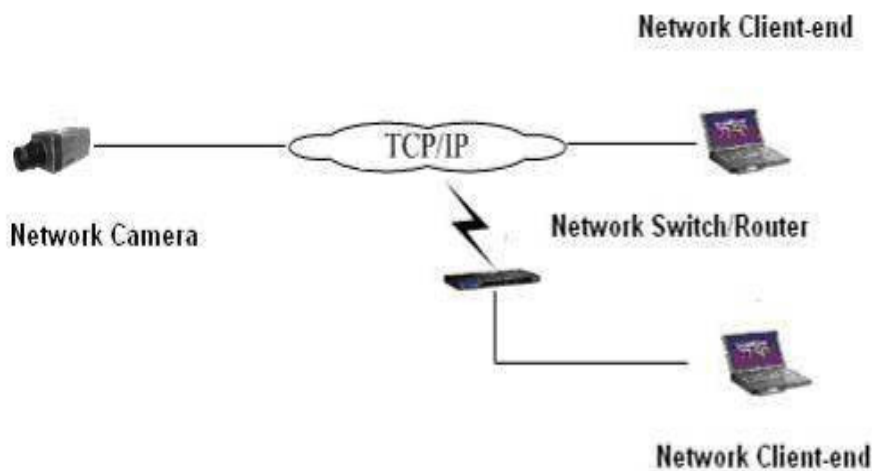
Use crossover cable if you want to connect Network Camera with PC.

LAN : Refer to figure for installation in LAN. When you need to install more than one camera, refer to the following-up contents to specify an independent IP address for each camera.



Public Network

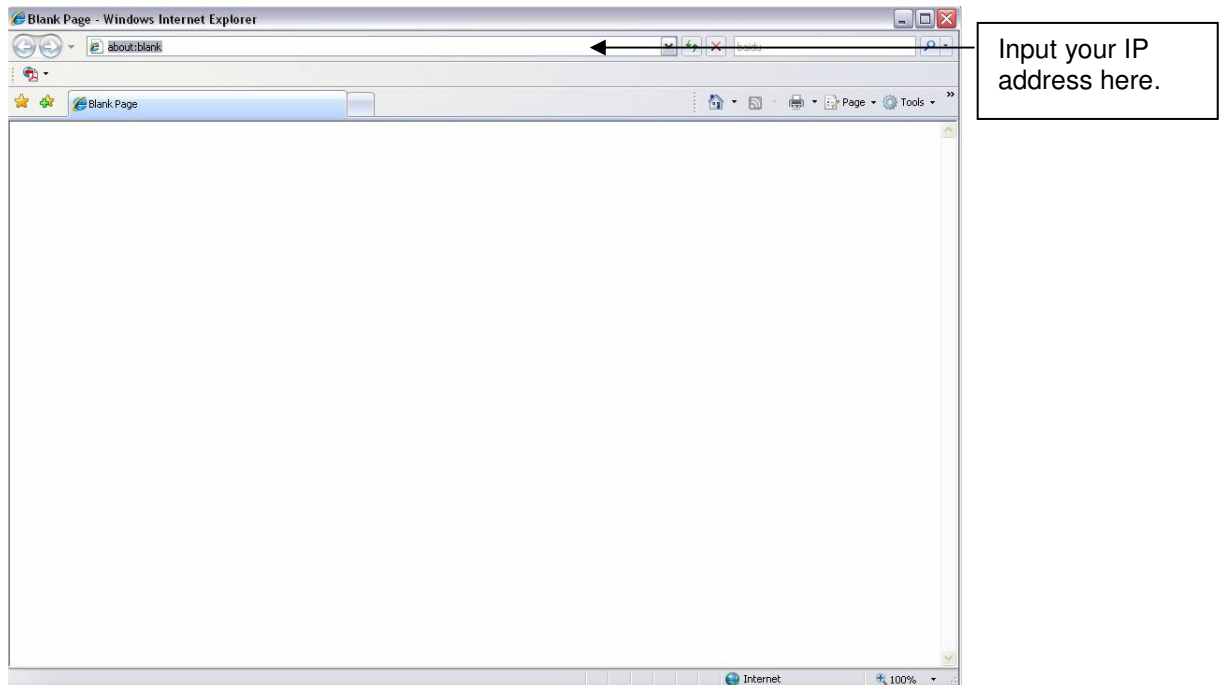
Install the network camera in the LAN, and then you need a PC in the same IP section of the camera. Now you can set PPPoE or use specified IP (Public IP) .The above information you can get from your internet service provider (ISP).



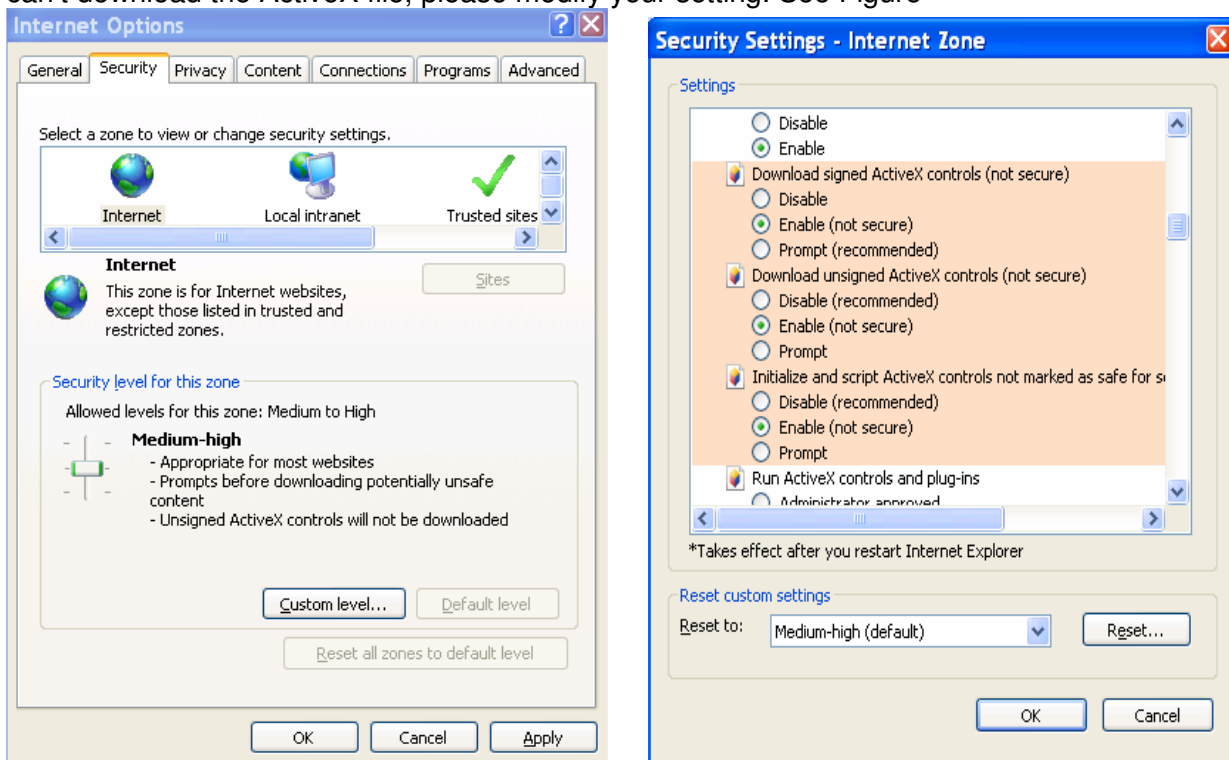
6.2 Login

Open IE and input network camera address in the address column.

For example, if your camera IP is 192.168.1.108, then please input http:// 192.168.1.108 in IE address column.

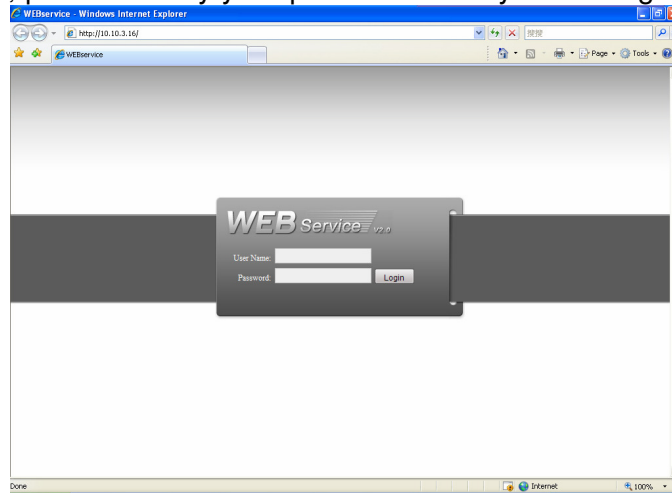


System pops up warning information to ask you whether install controls or not. Click "Yes" continue. If you can't download the ActiveX file, please modify your setting. See Figure



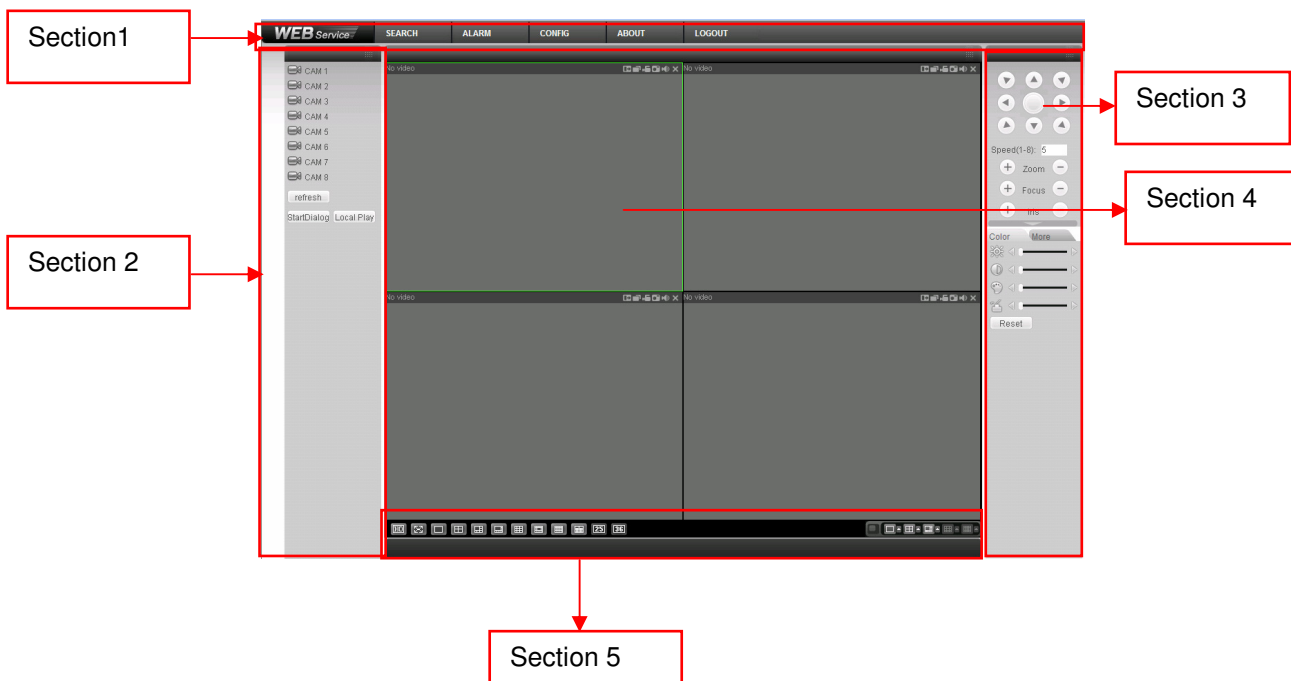
After installation, the interface is shown as below. .Please input your user name and password. Default factory name is admin and password is admin.

Note: For security reasons, please modify your password after you first login.



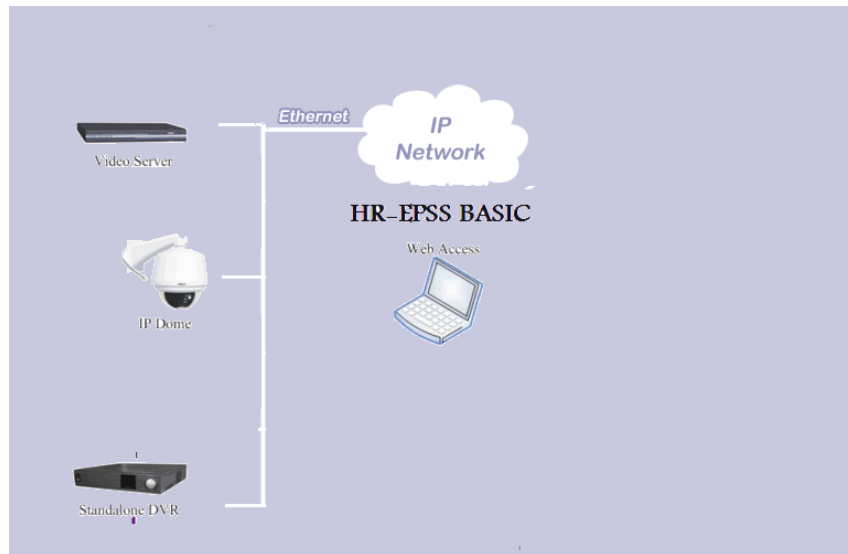
After you logged in, you can see the main window This main window can be divided into the following sections.

- Section 1: there are five function buttons: configuration (chapter), search (chapter), alarm (chapter), about (chapter), log out (chapter).
- Section 2: there are channel number and three function buttons: start dialog and local play, refresh.
- Section3: there are PTZ (chapter), color (chapter) button and you can also select picture path and record path.
- Section 4:real-time monitor window. Please note current preview window is circled by a green rectangle zone.
- Section 5: Here you can view window switch button. You can also select video priority between fluency or real-time.
 - ✧ System monitor window switch supports full screen/1-window/4-window/6-window/8-window/9-window/13-window/16-window/20-window/25-window/36-window.



7 QUICK GUIDE TO THE CHOICE OF SOFTWARE

7.1 HR-EPSS BASIC



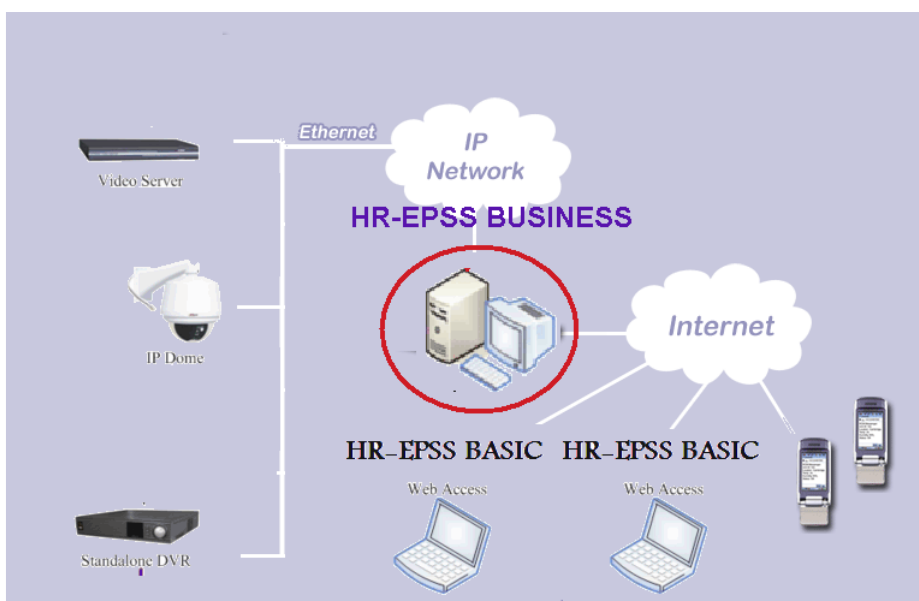
Install the HR-EPSS Basic (Pro Enterprise Surveillance System Basic) to use the following functions:

- Live playback
 - IP devices
 - Multiple IP devices
 - Plans to display time
- Playing recorded files
 - Playback in single channel or 4 channels mode.
- Download recorded files
 - Download of multiple files contemporaries.
- Management and configuration of IP devices

Note: Refer to the manual in the CD for more information.

7.2 HR-EPSS BUSINESS(trial 90gg)

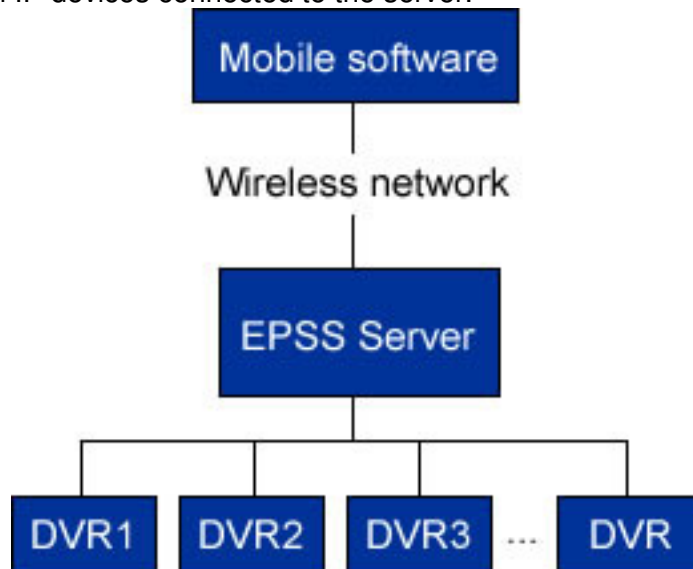
To activate the software contact the HR Europe Service Center .



Install the HR-EPSS Business (Enterprise Business System Surveillance Pro) on a PC / Server in order to centralize all IP devices.

The business version can be used in server mode, in which all IP devices will be added and managed in Client mode, so it's enough connect to the server in order to handle all IP devices that it manage.

The Business Software HR-EPSS supports connection through mobile Smartphones and PDAs, for Live viewing and playback of all IP devices connected to the server.



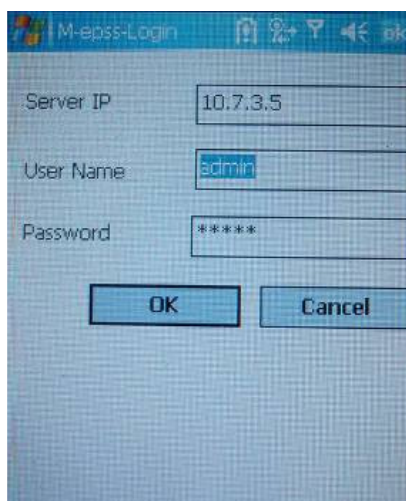
Note: Use a Static Public IP Address to contact the Server from remote locations. Refer to the manual in the CD for more information.

7.3 HR-MOBILE PSS

MINIMUM SYSTEM REQUIREMENTS:

- Smart Phone equipped with MS Windows Mobile 5.0 or Higher.
- Connection GPRS, EDGE, UMTS.
- Display TFT 2,8"
- ADSL connection with Static Public IP Address where you installed the HR-EPSS Software Business. It is necessary send the MPSS.exe software to your mobile phone. Choose your referred connection (Bluetooth, IR, Cable, Memory Card) using your mobile phone user manual. Configure your Internet connection, check live signal and start application.

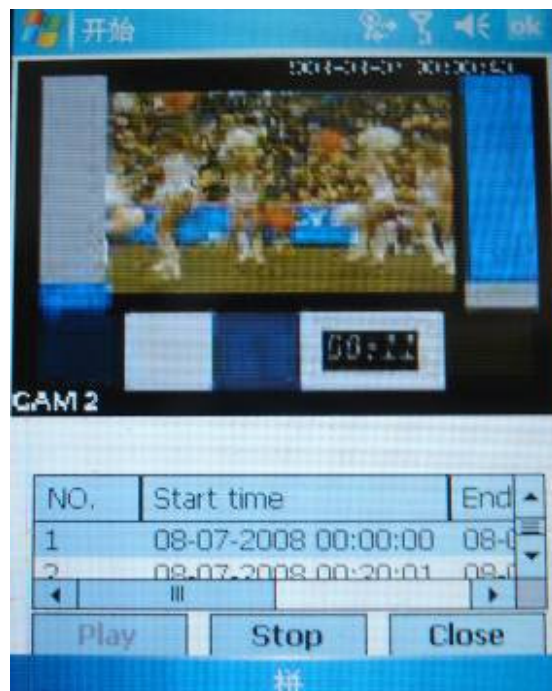
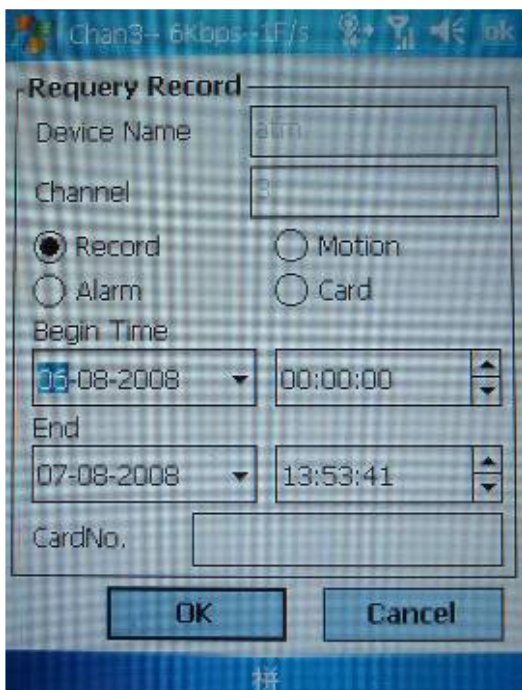
Set the connection parameters to the server-HR EPSS remote provided by the ISP, user name, password.



After you login screen looks like.



Each of the devices connected to the server will be showed in list. Connecting to the device you want to see Live images recorded. If is connected camera IP, you can also control the movement.





Technical specifications can be modified without any preliminary notice

This manual may not be reproduced in whole or in part (except brief quotations in articles or magazines), without the 'written permission of HR EUROPE.

HR EUROPE s.r.l.

ROMA: sede legale e amministrativa; Via Giulianello, 1-7 – 00178 Roma, ITALIA – Tel +39 06 7612912 Fax +39 06 7612601

TORINO: sede operativa; Via G.B.Feroggio, 10 – 10151 Torino, ITALIA – Tel +39 011 453 53 23 Fax +39 011 453 70 49

SHANGHAI: ufficio di rappresentanza; Minhong Residence, Room 506, N°50 Jinzhu Road 200336 Shanghai, CHINA

Tel(Fax):+86 21 62086781 – e-mail: infoshangai@hrctv.com

e-mail: info@hrctv.com web: www.hrctv.com – Codice Fiscale e Partita IVA 06397551000 – Iscrizione R.E.A. 966880